



2265 Crosswind Drive • Prescott, AZ 86301
(928) 636-3175

8190 AFT BRACE KIT

For use with C2101, C4102, C4104 & C4112
Suspension Kits

INSTALLATION INSTRUCTIONS



WARNING

1. Read and understand all instructions, warnings and cautions in these instructions, your owner's manual and related service manuals before the installation or use of this product. **DO NOT** install or use this product if there is anything you do not understand in these instructions or related materials.
2. Certain Trail Master products are intended to improve off-road performance. Modifying your vehicle for off-road use may result in the vehicle handling differently than a factory equipped vehicle. Use of oversize tires, suspension lifts, body lifts and other suspension modifications may raise your vehicle's center of gravity resulting in an increased tendency for the vehicle to pitch and roll during sudden turns or abrupt maneuvers. Extreme care must be used to prevent loss of control or vehicle roll over. Failure to drive your modified vehicle safely may result in serious injury or death. Drive at reduced speeds to ensure your ability to maintain control of the vehicle under all driving conditions. **Always** wear seat belts.
3. **DO NOT** combine suspension lifts, body lifts or other lift devices. Combined use of lifts may result in unsafe and/or unexpected handling characteristics (see enclosed product safety WARNING label).
4. Many states now have laws restricting vehicle modifications such as lift, bumper height or other alterations. Consult your state vehicle equipment laws to determine if the installation of this system or other modifications are permitted.
5. The use of larger than OE tire and wheel combinations may reduce the effectiveness of the braking system (including ABS equipped) and increase the amount of pedal pressure necessary to obtain a given braking distance with normal stops and increase the stopping distance in a panic stop. Drive at reduced speeds and allow for extra stopping distance while driving a vehicle equipped with larger than OE tires. Discuss this issue with your tire and wheel dealer before installing larger tires and do not use tire and/or wheel combinations that compromise safe braking performance.



CAUTION

1. Proper installation of Trail Master products requires knowledge of recommended procedures for disassembly/assembly of OE vehicles and components (i.e. steering tie rods, control arms, brake calipers, etc.). Access to OE shop manuals and special tools is required. Attempting to install this system without knowledge of these procedures may affect the safety of your vehicle and/or the performance of these components. Trail Master strongly recommends that this system be installed by a certified mechanic with off-road experience.



CAUTION

2. Use the appropriate tool for the job and be sure that tools are in good condition. Failure to use proper tools and/or tools in good condition may result in personal injury.
3. Always wear safety glasses while installing this system to avoid eye damage from debris, broken tools, etc.
4. Use Loctite® 242/ 243 or equivalent thread locker on all metal fasteners (per the manufacturers directions) unless otherwise noted in these instructions. Failure to use thread locker may result in fasteners becoming loose over time.
5. The components included in this system require periodic inspection for wear or damage. Visually inspect the suspension, braking and steering components after every six months of normal on-road driving and after EVERY off-road excursion. Re-torque all fasteners at these same intervals. Refer to the attached torque chart or specific instruction step for torque values. Worn, damaged or loose parts can fail suddenly resulting in loss of control of the vehicle and personal injury.

PRE-INSTALLATION NOTES



WARNING

1. Properly block and secure vehicle prior to installation.

Compare parts included in your system with the enclosed parts list. Placing hardware with components before you start may reduce installation time. Contact your Trail Master dealer if any parts are missing or appear to be different than those indicated on the parts list.

ADDITIONAL NOTES

1. Thoroughly inspect all vehicle components to ensure that the vehicle is in excellent mechanical condition. Make repairs or replacements as necessary prior to installation of this system. Do not install this system if vehicle is not in excellent mechanical condition. If you are not capable of performing this inspection, take the vehicle to a reputable automotive service shop or technician.
2. Retain this instruction sheet, proof of purchase and all other documents pertaining to this system and it's installation, with your vehicle's permanent records. **PROOF OF PURCHASE IS REQUIRED FOR WARRANTY PARTS ASSISTANCE.**
3. If you are a professional installer, please be certain that all documentation pertaining to this installation is forwarded to the vehicle owner.

PARTS LIST

Mount Bracket (201009).....	2
Aft Brace (201005).....	2
Nut Plate (201014).....	1
Hardware Bag (BRACEBAG1).....	1
1/2-13 UNC x 4 LG Hex Bolt (12400CHHC).....	4
1/2 SAE Flat Washer (W12S).....	8
1/2-13 UNC Stover Hex Nut (N12CS8).....	4
7/16-14 UNC x 1 1/4 LG Hex Bolt (76114CHHC).....	2
7/16 SAE Flat Washer (W76S).....	2
.735 ID x 1/32 OD x 1.06 LG Bushing (201018).....	8
.750 OD x .095 Wall x 2.75 LG Sleeve (140).....	4

INSTALLATION INSTRUCTIONS

1. Remove the trans skid plate, if vehicle is so equipped.
2. Install bushings (201018) and sleeves (140) into aft braces (202505). Loosely attach aft brace brackets (201009) to the transmission crossmember using nut plate (201014). Attach aft braces to crossmember (201004) and mount brackets (201009) using hardware provided. Tighten all fasteners used in this step. **Figs. 1, 2 and 3**

FROM BRACE BAG1 USE:

- (4) 1/2-13 UNC x 4 LG Hex Bolt (12400CHHC)
- (8) 1/2 SAE Flat Washer (W12S)
- (4) 1/2-13 UNC Stover Hex Nut (N12CS8)
- (2) 7/16-14 UNC x 1 1/4 LG Hex Bolt (76114CHHC)
- (2) 7/16 SAE Flat Washer (W76S)
- (8) .735 ID x 1/32 OD x 1.06 LG Bushing (201018)
- (4) .750 OD x .095 Wall x 2.75 LG Sleeve (140)

3. If vehicle is equipped with a transmission skid plate, notch the skid plate for clearance of the strut mount bracket. Reinstall skid plate using existing hardware.



Fig. 1

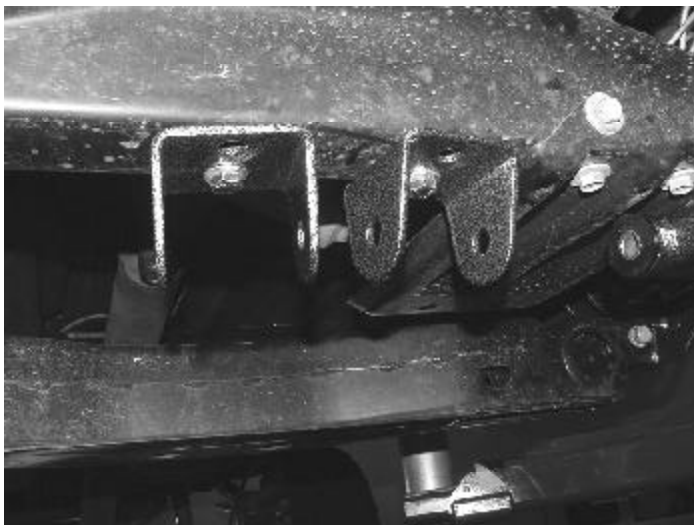


Fig. 2

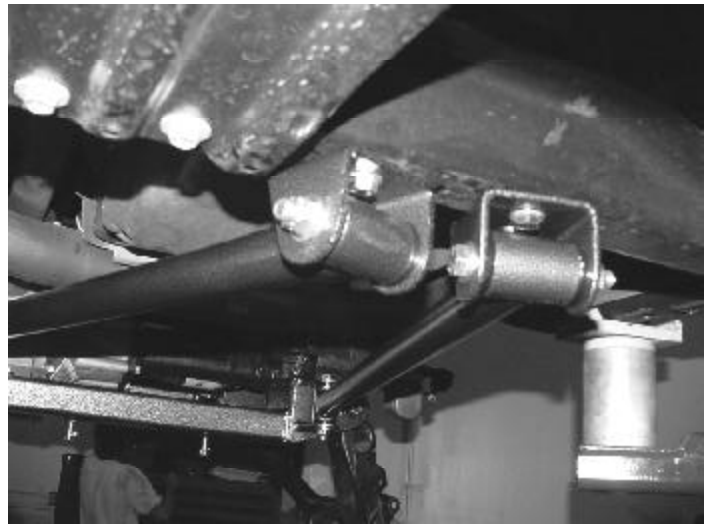


Fig. 3

POST-INSTALLATION NOTES



WARNING

1. Check all fasteners for proper torque before driving the vehicle for the first time with this kit, after the first 500 miles, after each off-road use and during routine vehicle servicing. Worn, damaged or loose parts can fail suddenly resulting in loss of control of the vehicle and personal injury.
2. In ALL steering and suspension positions, check to ensure that there is adequate clearance between ALL rotating, moving, fixed and heated members. Ensure adequate clearance around steering components, exhaust components, brake lines, fuel lines, fuel tank and electrical wiring.
3. Visually inspect components for wear or damage after each off-road use and during routine vehicle servicing. Worn, damaged or loose parts can fail suddenly resulting in loss of control of the vehicle and personal injury.
4. Trail Master's goal is to provide you with the best system possible for a reasonable cost. It must be noted that the components in your Trail Master system do not eliminate OE component weaknesses.
5. Retain this and all information regarding your altered vehicle for future reference. Thank you for choosing Trail Master. For questions, contact our Technical Assistance Department at (928) 636-3175.



2265 Crosswind Drive • Prescott, AZ 86301
(928) 636-3175
www.trailmastersuspension.com